

# User guide

## Installing SOTouch Software

SOTouch Windows Edition software is the software for your SOTouch touch screen solution. It provides full touch screen functionality for all applications running under Microsoft Windows XP Pro SP2, Windows 2000 SP4, WEPOS and Windows XPE.

Once you install SOTouch Windows Edition software, you can select objects and launch applications using your touch screen.

### *SOTouch Windows Edition Overview*

Your touch product includes several software tools to help you work with and customize the touch screen. Software drivers are available for touch-based applications for use in various environments.

Specifically, SOTouch Windows Edition software includes the following programs utilities:

- SOTouch Engine for Impact detection & recognition
- SOTouch Windows Edition software
- Help and documentation
- SOTouch calibration utility
- SOTouch Windows Edition software uninstall utility
- Visualizer software tool

### *System Requirements*

The minimum PC configuration for SOTouch Software Windows Edition is 1GHz Intel compatible CPU and 256 MB RAM.

It must be used with Sensitive Object Touch Panel and Controller.

A USB port is required.

### *SOTouch Software first installation overview:*

The software installation is done in two steps:

1. **Software Installation Wizard** installs SOTouch software engine on your computer

2. **Equipment Installation Wizard** configurations the software engine for your touch panel and then launches the calibration utility

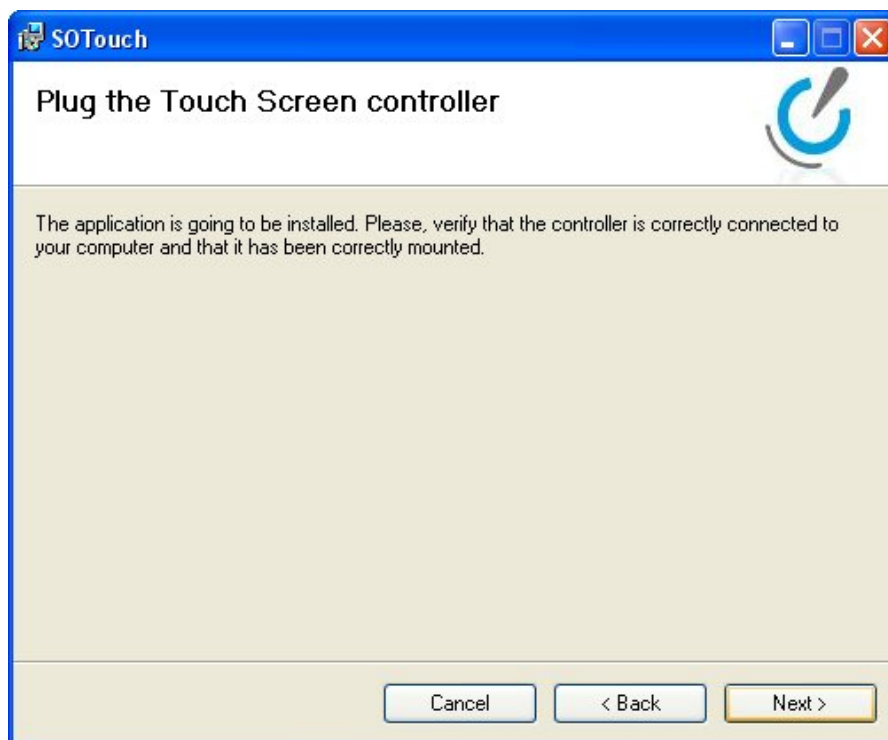
NOTE: For **multiple touch monitors** installation, please look first at the related section of this manual

### ***Software Installation Wizard***

Make sure you have completed touch panel and controller installation as described in the “Product Integration” section above before installing the software

- Power on your system. Make sure no application is open.
- If you install using a CR-ROM, insert the SOTouch CD into your computer’s CD driver.
- Using Windows Explorer, browse the folders and double-click the Setup.exe file.
- Follow the onscreen instruction to begin the installation.

Note: you can decide the installation folder for the application, although it is recommended to install it on the same disk drive as the one used by Windows™ operating system.



It is asked to verify that the touch screen is correctly plugged to the computer. If this is not the case, you can still go on with the installation, but the equipment installation utility will not be launched right away after the software installation.

### ***Equipment Installation Wizard***

Once software installation is complete, the equipment setup wizard will be launched.



It will then ask you to select your SOTouch equipment and provide with product information:

This is the second screen of the 'Install your SOTouch Equipment' wizard, titled 'Enter your product information'. It has a blue title bar with the same text and a close button. The main area has a light beige background. At the top, it says 'Enter your product information' followed by 'This information will help the system to select the appropriate configuration'. Below this, a paragraph explains: 'The product information is required for support and maintenance. It is available on the label provided with your touch sensor. Please, fill in carefully these parameters'. The form contains several input fields: 'Device:' with a dropdown menu showing 'USB#VID\_08BB&PID\_2900&MI\_00#6&961A911&1&0000'; 'Model:' with a dropdown menu showing '15-inch Sensor' and a 'Browse' button; 'Product Id:' with a dropdown menu showing 'AB-123' and a text field containing '15 Inch - 150T30P5L'; and 'Serial Number:' with two empty text fields. At the bottom, there are three buttons: '< Back', 'Next >', and 'Cancel'.

Please enter this information. It can be found on the SOTouch sticker label

- The *Model* depends on the touch panel family you are using (15 inches in the figure above)
- The *Product ID* is related to the touch panel model used and to its dedicated acoustic database file. It will be automatically filled with the choice of appropriate model
- The *Serial Number* is optional information. It helps define the correct data file

After entering this information and pressing *Next* button, the wizard summarizes the information before confirmation.

After you finish the equipment setup installation, the calibration utility will be launched right away (see SOTouch Control Panel section).

### ***Completing the Touch Screen Setup***

Once you've installed SOTouch software, you can optimize the performances of the touch screen using the SOTouch Control Panel, described in SOTouch Control Panel section. You can adjust settings for touch sensitivity, touch sounds, double-click speed, double-click area, and other cursor options. You can also use the control panel to set the engine status and calibrate a specific screen.

### ***Repairing a SOTouch Software installation***

In case you experience a program malfunction or if you want to reset all SOTouch software parameters to their default values, follow this procedure to repair the installation:

Click on Start → Programs → Sensitive Object → SOTouch → Uninstall SOTouch and select *Repair SOTouch* option.

You can alternatively:

Click on Start → Control Panel → *Add or Remove Programs*, click on *Change* button and select *Repair SOTouch* option.

### ***Uninstalling SOTouch Software***

The uninstall program removes all SOTouch software components from your computer, including system registry files.

Make sure the SOTouch software and Windows control panels are closed.

Click on Start → Programs → Sensitive Object → SOTouch → Uninstall SOTouch and select *Remove SOTouch* option.

You can alternatively go to the Windows™ Control Panel of the system, open the *Add or Remove Programs* wizard, *Change* SOTouch Edition program and select *Remove SOTouch* option.

## SOTouch Control Panel

You can use the SOTouch Control Panel to change the SOTouch software settings for your system. You can calibrate your screen, change touch parameters, set engine status; select touch sound feedback and change hardware properties in order to suit your preferences.

### *Control Panel Overview*

The SOTouch Control Panel consists of four tabs that allow you to determine the best settings for your touch screen configuration.

- Use the *Calibration* tab to calibrate the touch screen for the current video resolution.
- Use the *Device* tab to select the hardware devices and data files used by the SOTouch engine, in case you want to modify automatic data filled in by the Equipment Setup wizard. You can access to the recognition engine status as well.
- Use the *Settings* tab to set up options like mouse actions, engine sensitivity, sound and visual feedback features
- Use the *About* tab to get information on the software version, license and support contact.

You can also change these settings using the SOTouch icon in system tray menu.

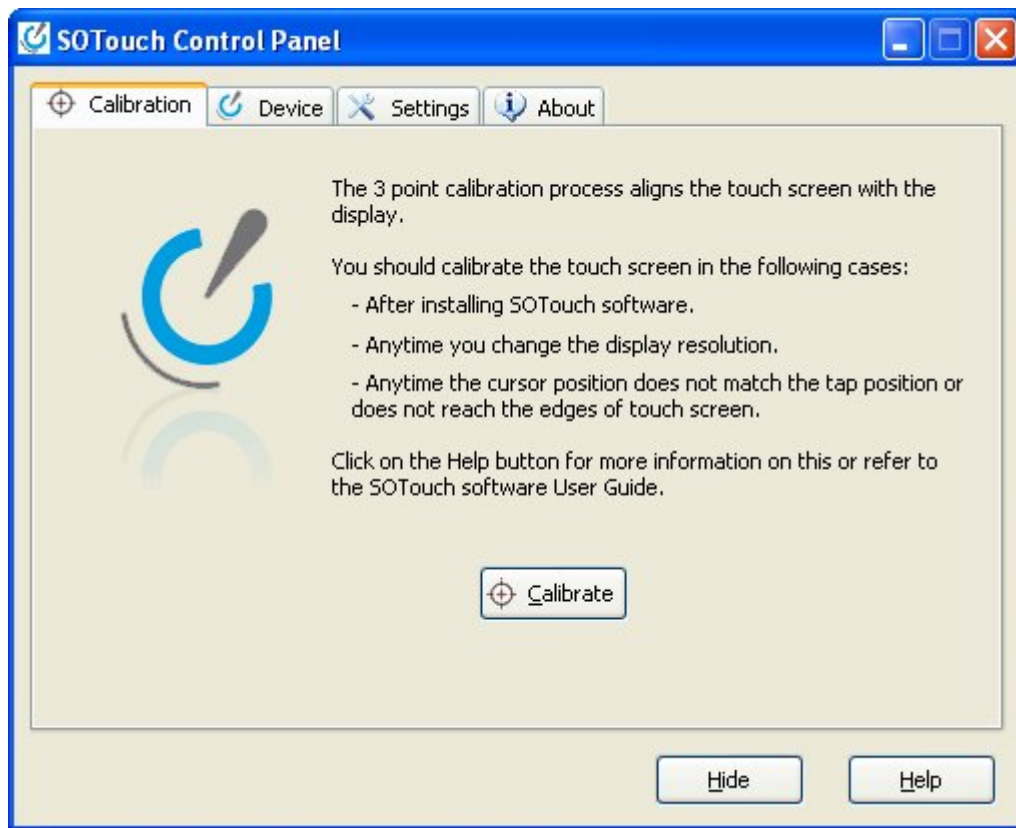
### *Opening the SOTouch Control Panel*

You can open the SOTouch Control Panel as follows:

- Click on Start → Programs → Sensitive Object → SOTouch → Configure SOTouch Engine
- If present: Click on the SOTouch icon in Windows system tray and on *Control Panel*

Once SOTouch Control Panel is started, it displays the main graphical user interface (GUI) and adds into the system tray the SOTouch icon with menus.

## Calibration Tab



The calibration process aligns the touch screen with the underlying video. Specifically, calibration defines the dimensions of the active area of the touch screen and locates the center of the touch screen. If the screen is not calibrated, the active area of the touch screen may not be aligned properly or may be unnecessarily small in size.

**WARNING:** Do NOT use your finger pulp to calibrate the touch screen. Use a sharp and rigid object like a stylus or a key

### When to calibrate the touch screen

You should calibrate the touch screen in the following cases:

- After installing SOTouch software
- Anytime you change the size of the video resolution (Especially ratios. If ratios are stable, the calibration will hold the resolution change). It is recommended to stop and start again the engine after the calibration in this precise case (see Device Tab)
- Anytime the cursor position doesn't match the tap position, or does not reach the edges of the touch screen

### Calibrating the touch screen

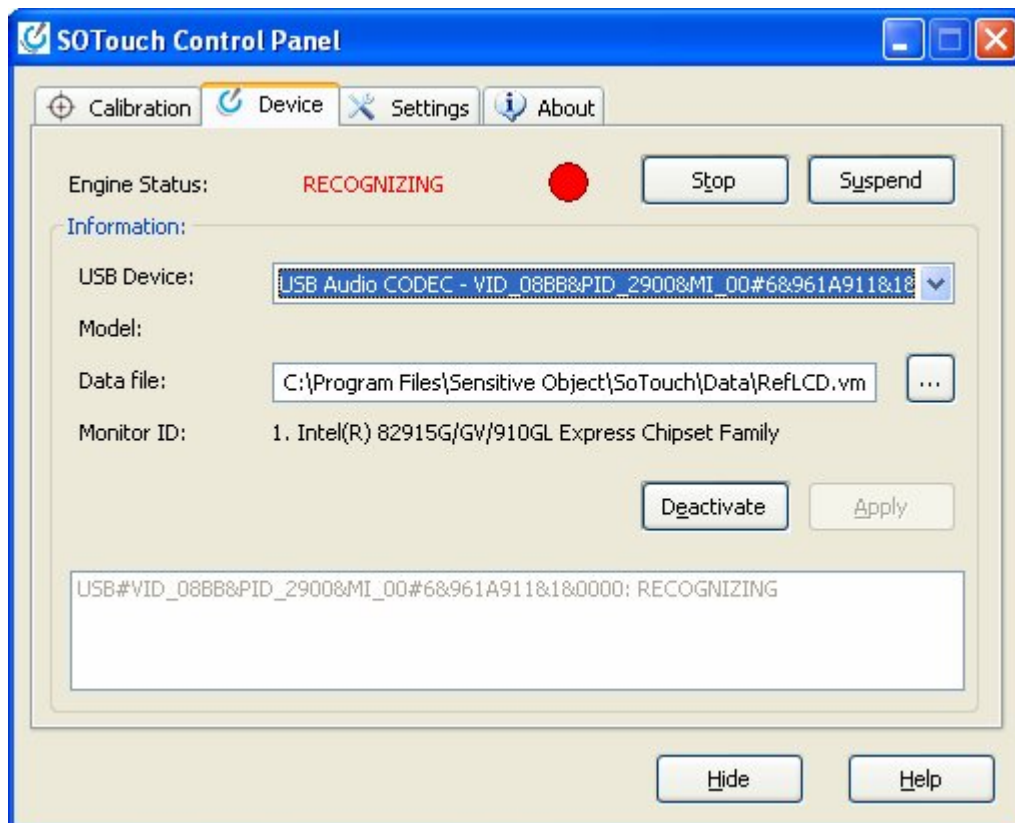
Select the Calibration tab and click the Calibrate button. A semi-transparent calibration window and black calibration targets appear in three corners of the screen. The upper-left one is blinking. The central window and some progress dots show the progress status of calibration.

For the three consecutive targets, tap eight (8) consecutive times on the target following the recommendations:

- Don't use your finger pulp as the tap precision will not be optimal. We suggest you to use a sharp object for calibration.
- Face the monitor directly and perform the calibration in the position (sitting or standing) you expect to use the touch screen.

NOTE: You can cancel the calibration process anytime, pressing the Cancel button. If no consecutive impact is detected during 20 seconds, the calibration process is automatically cancelled.

### *Device tab*



*Device* tab, is divided into two areas:

The *Engine Status* notifies if the touch screen functionality is activated or not. It allows you to start/stop, suspend/resume SOTouch Engine.

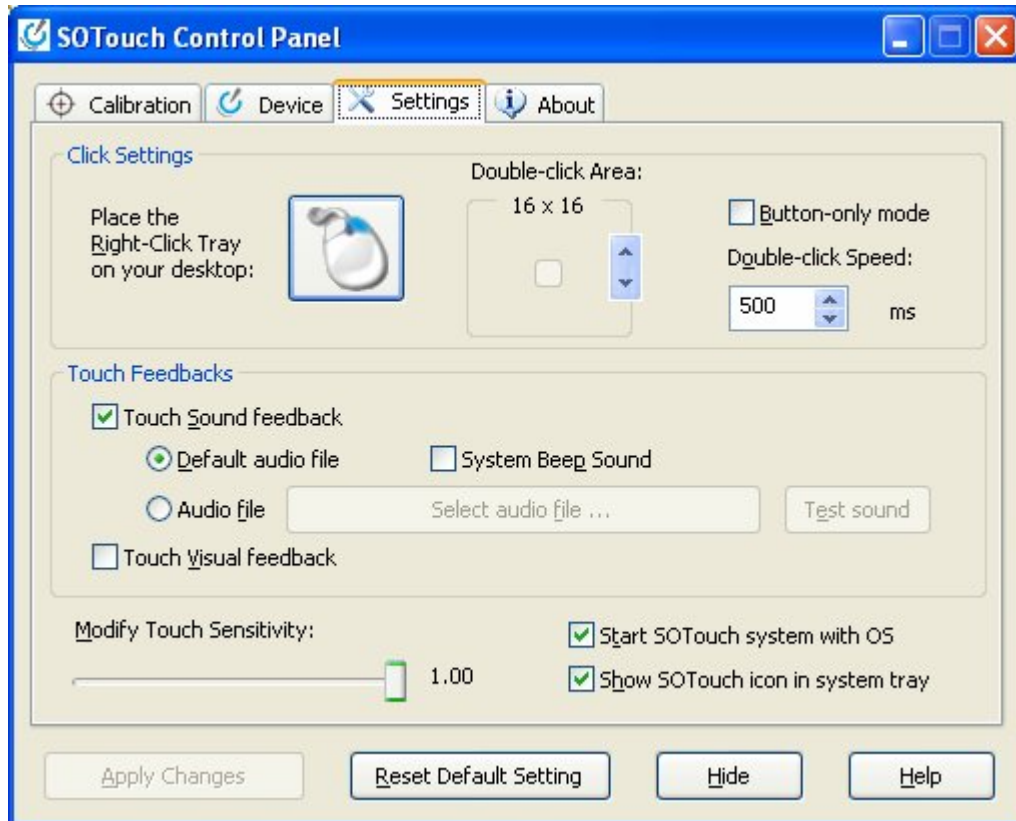
The *Information* section displays all available *USB Devices* that SOTouch Engine is able to listen to, and the information about the data file corresponding to the connected SOTouch panel.

**WARNING:** You should not change *USB Device*, *Model* and *Data file* settings. In case you want to change or reinstall your touch equipment, you should use the *Equipment Installation* utility:

Start → Programs → Sensitive Object → SOTouch → Equipment Installation

It is possible to deactivate a specific touch screen. It is useful when in multimonitor mode (see related section).

### ***Settings tab***



### ***Click settings section:***

Similarly to use a mouse, you can customize the touch and click parameters:

- *Right-Click utility:* You can here make appear a right click wizard on the screen. Clicking on it once, the click will be a right click. See *Right-Click Utility* section below for more information
- *Double-click Area:* You can define here the space in which you must touch in order to produce double-click. The default value is 10x10 pixels. Press the button *Apply* after changing these settings.
- *Double-click Speed:* You can define here how fast you must touch in order to produce double-click. The default value is 500ms delay. Press the button *Apply* after changing these settings.



NOTE: It is highly recommended not to change the delay setting. In case you wish to change this parameter, change it directly from the Control Panel of the operating system, rather than using the SOTouch Control Panel.

### ***Touch feedbacks section:***

You can customize sound and display feedback indicating touch screen impact detection.

#### *Touch Sound feedback options:*

- Default is operating system default sound. In case the system has no sound card, it will play the sound feedback using built-in speaker of the motherboard. Otherwise, it will play the default Windows sound.
- You can decide to force the use of the motherboard built-in speaker.
- You can also select any WAV audio file from the computer and test its sample sound.
- Press the button *Apply* after changing these settings.

#### *Touch Visual feedback:*

- If this option is on, a screen effect will be displayed at the location of the impact.
- Press the button *Apply* after changing these settings.

#### *Sensitivity settings*

You can define here the touch sensitivity in a range between 0 (lowest sensitivity) and 1 (highest sensitivity). The default sensitivity value is 1. Press the button *Apply* after changing these settings.

You can also define here if you want the SOTouch icon to appear in system tray menu, and if you want the driver to be launched when the OS is booting.

### ***About tab***

You will find in this tab the SOTouch software version, the licensing information and contact information.

## **SOTouch Applications**

## ***System tray menu***

Once SOTouch Control Panel has started, it shows the main graphical user interface but also adds to the system tray a SOTouch icon. Clicking on this icon, you have an easy access to the main software functions.



## ***Right-Click Utility***

*Right Click Utility* is an application that allows you to perform a right-click action.

You can launch this application as follows:

- Click on Start → Programs → Sensitive Object → SOTouch → Start Swap Mouse
- Click on SoTouch icon in system tray menu and click on *Swap Mouse* button



When this application is started, an icon appears on the desktop (always on top). This icon can be positioned anywhere on the desktop. The active click button is blue on the icon.

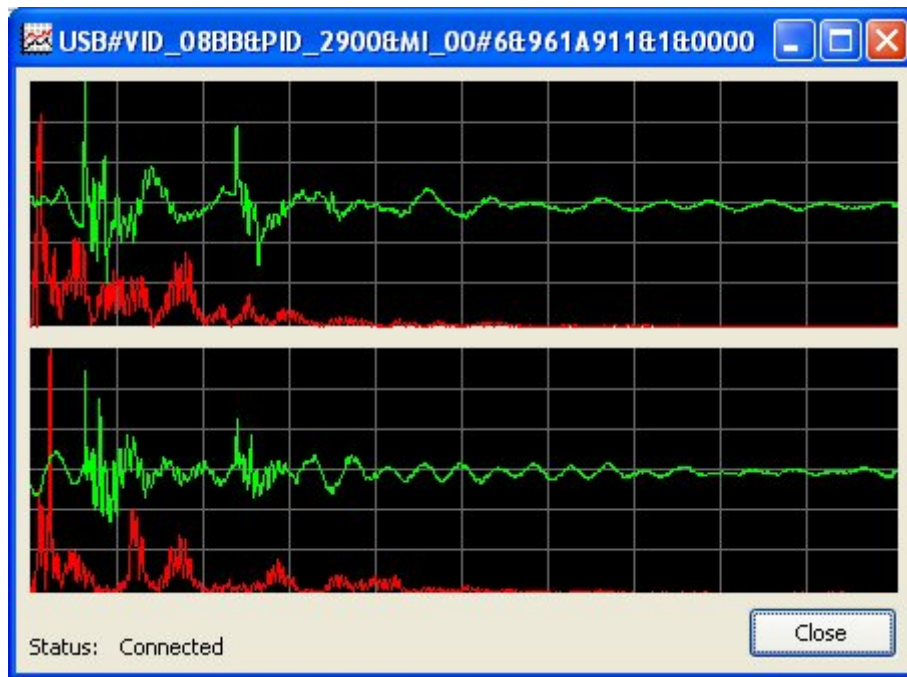
Click on the mouse displayed on the screen and the next tap on the screen will generate a right click instead of a left click. Then it switches back to left click.

Left button is typically used for normal select and drag. Right button is typically used for applets such as context menu and special drag.

If you want to hide the mouse icon from your desktop, click on it and select the *Exit* option.

## ***Visualizer***

The visualizer is an optional application; it is not present on all distribution of the SOTouch software and is useful essentially for support purpose.



Visualizer application displays the two acoustic signals captured from the controller, including frequency and amplitude of the signals.

This application is useful for troubleshooting purpose.

You can launch this application as follows:

- Click on SOTouch icon in system tray menu and click on Visualizer button (only available if you have activated this option – only for advanced users)

### **Frequency**

Frequency of the impact is displayed in green.

### **Amplitude**

Amplitude of the impact is displayed in red.

## Multiple Touch Monitors Support

SOTouch software supports multiple touch monitors use in *extended* mode and in *clone* mode

### *Installation overview*

1. Install the first monitor following the steps described in the *SOTouch Software first installation overview* section of this manual

**WARNING:** During that process, plug **ONLY** the USB cable of your first touch monitor. Do not plug the USB cable of any additional touch monitor.

2. When the first touch monitor is installed and working: For each additional touch monitor, please follow the steps described in the section below:

### *Additional touch monitor installation*

- Plug the USB cable of the additional touch monitor you want to install
- Go to your installation folder and launch *Equipment Installation* application

After pressing *Next* button, brows *Devices* tab and you will see a second USB device on the list, select it as in the figure below:

**Install your SOTouch Equipment**

**Enter your product information**  
This information will help the system to select the appropriate configuration

The product information is required for support and maintenance. It is available on the label provided with your touch sensor. Please, fill in carefully these parameters

Device:

Model:

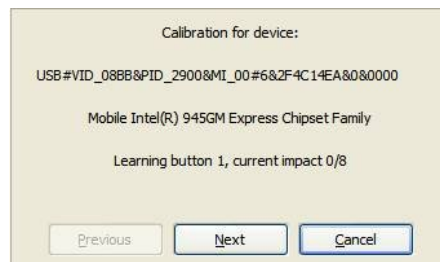
Product Id:

Serial Number:

< Back Next > Cancel

Select this second device and chose the *Model*, *Product Id*, and fill in the *Serial Number* (optional). Then press *Next* button and *Finish* button on the next tab.

- Calibrate your additional touch monitor: During calibration process, press *Next* button as in the figure bellow to calibrate the next touch monitor.

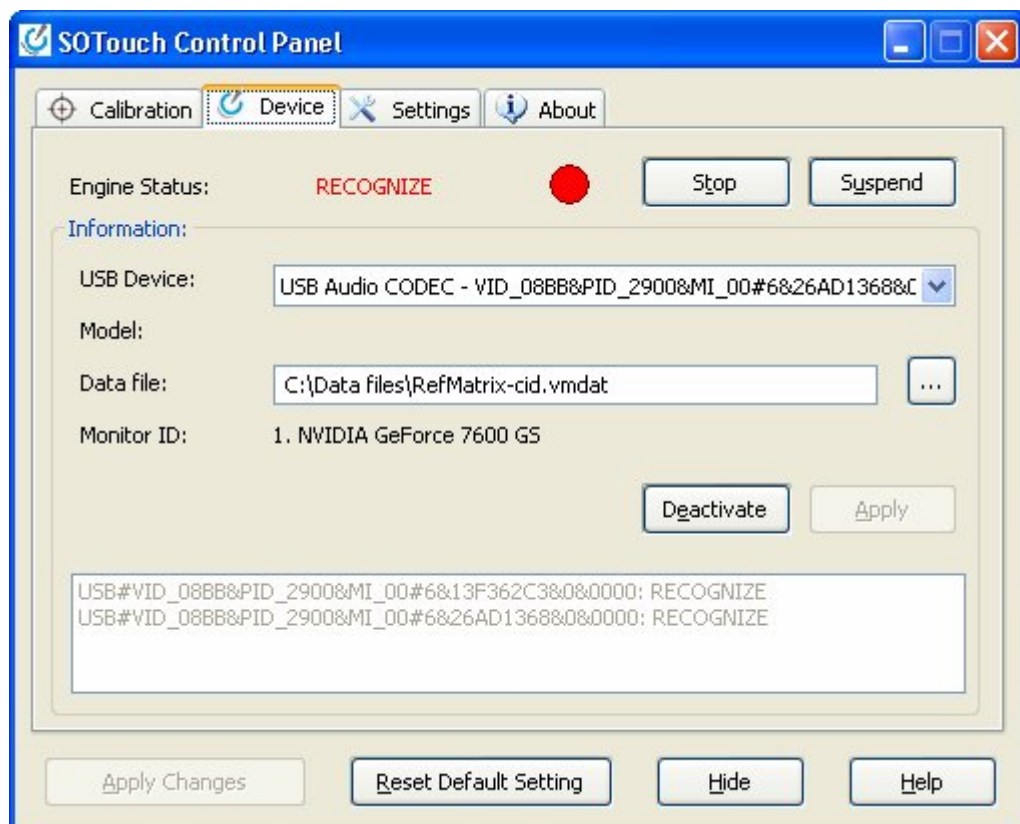


Press *Finish* button when all your touch monitors are calibrated.

### ***Multiple touch monitors activation/deactivation status***

In *SOTouch Control Panel* application, *Device* tab, *Information* field you can:

- Activate/deactivate each touch monitor by selecting its *USB Device* and *Activate/Deactivate* button
- See the *Model*, *Data file* and *Monitor ID* association, browsing the *USB Device* tab
- See the activity status for each touch monitor



## Troubleshooting

### ***Q1: Touch doesn't work***

Please try the following operations:

- Make sure the USB cable is securely attached at both ends, go to SOTouch Control Panel Engine tab, stop and restart the engine.
- The USB device used may be incorrect; go to SOTouch

Control Panel Properties, select “USB Audio Device” and press “Activate” button. If there are multiple “USB Audio Device” available and the touch is still not working, please try the same operation with the other USB audio devices.

- Restart your computer and SOTouch software.

### ***Q2: Cursor does not reach out to edges of screen***

Try calibrating the touch screen with a rigid and sharp tool (stylus, key...): go to SOTouch Control Panel Calibration tab and press “Calibrate” button.

When calibrating the screen, be sure you touch the center of each target.

### ***Q3: Double-click on touch screen does not work***

Adjust the double-click settings. Go to SOTouch Control Panel Parameters, increase the double-click area and decrease the double-click speed.

### ***Q4: I changed the resolution and calibrated again the touch screen, but I see an offset between impact and mouse click***

It is recommended to go in the Device Tab of the Control Panel, stop the engine and start it again.